



INSTALLATION INSTRUCTION STRETCH TENT

V24.12.16



**DUTCH CRAFTSMANSHIP
GLOBAL EXCELLENCE**



CONTACT

Qtents Head Office

Zanddonkweg 2a
5144 NX Waalwijk
The Netherlands

Postal address

T.a.v. Qtents Sales
Zanddonkweg 2a
5144 NX Waalwijk
The Netherlands
+31 (0)85 040 99 63
sales@qtents.com

QTENTS.COM

All rights reserved:

No part of this publication may be reproduced, stored in a retrieval system, or transmitted in any form or by any means, electronic, mechanical, photocopying, recording or otherwise, without the prior written permission of the publisher.

For information on the stretch tents visit www.qtents.com.

For more information about the manual or additional information, please contact: sales@qtents.com

**DUTCH CRAFTSMANSHIP
GLOBAL EXCELLENCE**



WARNING!

This tent product is not intended to be used as a shelter in severe weather. Evacuate immediately if threatening weather occurs (or is predicted) or a circumstance arises that compromises safe use of this product. Threatening weather includes electrical storm systems, moderate to strong winds (over 60 km/h or 7 bft), heavy rain, snow, or any circumstance that casts any doubt on the structural integrity of the tent.

CAUTION!

The installation of electrical, plumbing, lighting, appliances and/or air treatment -equipment is not covered in this manual. Users/installers must follow local regulations for the installation of these with certified personnel. Qtents B.V. will be indemnified and held harmless for any such use or injury resulting from its use.

IMPORTANT SAFETY INFORMATION

Proper safety equipment for personnel must be worn at all times during installation of all tent products.

- Safety helmet
- Safety glasses
- Work gloves
- Long trousers
- Safety shoes

CONGRATULATIONS ON THE PURCHASE OF YOUR QTENT!



Qtents produces stretch tents of high quality. This manual will help you set up your stretch tent in a safe, responsible and beautiful way. If you ever encounter any problems when installing your tent, please call your contact person or contact the Qtents sales department: sales@qtents.com

GENERAL CARE AND GUIDELINE 6

1. Care and maintenance of the tent fabric	6
2. Hardware care and maintenance	8
3. Flame retardant fabric	9
4. Anchoring	9
5. Installation guidelines	10
6. General installation guidelines	11
7. Post-installation guidelines/maintenance	11
8. Safety & evacuation planning	12
9. General guidelines for dismantling/removal	13

PARTS LIST 14

INSTRUCTIONS FOR SETTING UP STRETCH TENT 16

PREPARATION 16

1. Tools	16
2. Center pole	16
3. Corner and edge posts	17
4. Rope	17

IMPLEMENTATION 18

1. Ground sheet	18
2. Setting out anchors	19
3. Installing anchors	19
4. Corner pole	20
5. Edge pole	21
6. Centre pole	21
7. Finishing pole	22



ADDITIONAL OPTIONS	24
1. Side walls	24
2. Storm straps	25
3. Center pole foot	25
4. Edge pole foot	25
5. Wooden tensioner	26
6. Rope tensioner	26
7. Coupling gutter	26
8. Aluminium poles	27
MAINTENANCE INSTRUCTIONS	28
APPENDIX	30
APPENDIX 1. PARTS LISTS	30
1.1 Normal rigging	30
1.2 Heavy rigging	31
1.3 Bags	32
1.4 Wooden pole set	33
1.5 Additional parts	34
APPENDIX 2. FLOORPLANS	36
2.1 Floor plan - 1 center pole	36
2.2 Floor plan - 2 center poles	37
2.3 Floor plan - 3 center poles	38
APPENDIX 3. KNOTS	39
3.1 Overhead loop	39
3.2 Directional loop	39
APPENDIX 4. INSTALLATION MANUAL SIDE WALLS	40
4.1 Installation preparations	40
4.2 Installation steps	42



GENERAL CARE AND GUIDELINES

1 CARE AND MAINTENANCE OF THE TENT FABRIC

The tent canvas developed for this tent system requires special attention during installation, cleaning and storage to maintain maximum service life. Please follow the guidelines listed below for care and maintenance of this product.

GROUND SHEETS

Using ground sheets under the tent during installation and removal will protect the tent fabric from dirt and damage.

TREATMENT AGAINST MOULD

The fabric is pre-treated with fungicides that help prevent the growth and spread of mould and mildew. Even though the fabric has been treated, care should be taken to prevent possible growth. If you see mould, wipe it off immediately with a clean towel.

CLEANING FABRIC

The best way to clean tent fabric is to use a soft towel or a soft-bristled brush immersed in warm water. The use of commercial front-loading or top-loading washing machines is not recommended and will void the fabric's warranty. These machines overload the fabric and may force water into the fabric. As with any cleaning, the fabric should be hung up to dry completely before folding and storing. Cleaning agents containing chlorine bleach and/or petroleum-based solvents degrade the fabric, discolour it and shorten its life. If you have a difficult stain that cannot be removed with traditional cleaning, contact your retailer before using other chemicals that may further damage the fabric.

DRYING

The best way to dry tent fabric is to hang it in a low-humidity environment. Circulating air around the surface of the hanging fabric using fans will also speed up the drying process and improve drying time in more humid environments. Also make sure the tent's parts and other components are dry before folding. These components may include reinforcements, rope, wire and/or any other part permanently attached to the tent fabric. Using commercial drying equipment and drying with heat will void the warranty on the fabric. **DO NOT STORE THE FABRIC WET.** Wet folded and stored fabric will go mouldy.



TENSIONING

Do not overstress the tent fabric during installation, use or removal. Over-tensioning can cause permanent damage to the tent fabric. The clearest sign of overstretching is tension wrinkles at the tension points. Ensure that the frame and pole components match the tent design.

STORAGE RECOMMENDATIONS

The tent fabric should be stored dry in a cool, dry place in the protective storage bags included with your purchase.

INSPECTION

Before each use, each component of the tent system should be thoroughly inspected to ensure that its structural stability has not been compromised. Parts of the canvas that are torn, ripped, frayed or damaged should be replaced immediately and should not be used.





2 HARDWARE CARE AND MAINTENANCE

The hardware components developed for this tent system require specific attention during installation, cleaning and storage to maintain maximum service life. Please follow the following maintenance and care guidelines for this product.

OXIDATION

The hardware components for this tent system have special coatings to reduce oxidation. After use, these coatings should be maintained to limit oxidation and ensure that the product reaches its full intended life. On plated or powder-coated steel components, rust should be removed immediately with a hard steel brush and sprayed with a galvanising spray or durable paint to seal the steel against the elements. Anodised aluminium parts are scratched over time and these scratches can develop a thin black oxidation that is common on aluminium with a smooth finish. This black oxidation can stain any fabric parts in contact with the post/part. Your best preventive measure is to avoid scratching the anodised coating by avoiding sharp edges that may come in contact with the aluminium part.

CLEANING HARDWARE

It is very important to keep your hardware parts clean and free from dirt, oxidation and other chemicals. especially if these parts come into contact with fabric parts during installation, use or disassembly of your product. Dirt, oxidation or chemicals on the surface of hardware components can transfer the contamination to the fabric, causing permanent stains or permanent damage to the fabric membrane. If hardware components are found to be dirty, wipe them down immediately to remove the foreign material.

STORAGE RECOMMENDATIONS

Tent system hardware should be stored in a cool, dry place. Anodised aluminium components can be stored outdoors, but should be covered to prevent foreign material from collecting on the components that could stain or damage the membrane during installation or use. All steel parts should be stored indoors in a dry/low humidity environment.



INSPECTION

Before and after each use, each component of the tent system should be thoroughly inspected to ensure that structural stability has not been compromised. Hardware parts that are bent, torn, frayed or damaged should be replaced immediately and not used. Particular attention should be paid to all anchoring devices, including ratchets, ropes, cables and straps.



3 FLAME RETARDANT FABRIC

Our fabrics used in the production of our tents are flame-retardant certified to M2 &/or B1.

4 ANCHORING

All anchoring points should be accurately indicated as described in the manual and the plans included therein.

A wide variety of ground anchoring devices are commonly used. The soil conditions and resulting load capacity of ground anchors vary from site to site, and may vary within a given site. The tent owner and/or installer is fully responsible for ensuring that the choice and installation of anchoring devices is suitable to withstand the pull-out load specified in the product manual.

In wet ground conditions, anchoring performance may decrease; this should be taken into account. Ensure that no water can drain or collect near the anchors. Anchoring capacity can be developed with one large anchor or by using several smaller anchors. Ensure that the anchors installed can adequately withstand the pull-out loads. It is recommended to test some individual anchors up to 75% of the pull-out load.



5 INSTALLATION GUIDELINES

Correct installation of this stretch tent requires dedication and considerable skill and expertise that can only be obtained through proper field training and experience by a professional installation team overseeing marquees.

- Obtain any required permits or inspections required by local codes and regulations.
- Clear the site in preparation for the planned activity.
- Check for underground utilities before installing anchoring devices.
- Check for overhead obstacles that may interfere with tent installation. Do not install tents within 1m of overhead pipes, power lines or other obstacles. Installation under or near trees should be avoided.



6 GENERAL INSTALLATION GUIDELINES

Every part of the stretch tent should be inspected for visible signs of damage by the installer at the beginning of the installation. All damaged materials should be repaired or replaced immediately.

The owner and/or installer should carefully consider the weather conditions before setting up the tent, as the hardware and canvas cannot transfer wind loads or drain rainwater loads (possible puddling) if the tent is not fully anchored, installed and/or tensioned. It is not recommended to install or remove the canvas when the wind speed is above 25km/h (4 bft). The decision to install or remove the tent fabric should be the responsibility of the experienced tent installer based on prudent life safety and judgement considerations.

Adequate and appropriate installation and maintenance procedures are necessary to achieve and maintain the full design load of the tent. The owner and/or installer are fully responsible for the proper installation and maintenance of the tent.

Certification of this marquee is valid only when using Qtents supplied and insured parts or components that meet or exceed the requirements of the design during installation of this structure.

7 POST-INSTALLATION GUIDELINES

Each part of the tent should be inspected at the end of the installation for visible signs of damage by the installer. In addition, an inspection should be carried out after severe weather or wind conditions that may have affected the overall integrity of the design. All damaged materials should be repaired or replaced immediately.

A variety of material and weather factors may result in fabric stretching, strap stretching, rope stretching, mast foot sagging, changes in design geometry, etc. Changes in the design geometry of the tent and consequently the structural performance characteristics of the tent may occur while the tent is in use and not assisted by the professional installer. It is recommended that a maintenance agreement be concluded between the customer/user of the tent and the installer, which includes periodic inspections and adjustments. If rainwater remains on the canvas in a particular place, evacuate the tent, remove the water and adjust the tension of the canvas to obtain drainage.



8 SAFETY & EVACUATION PLANNING

It's the responsibility of the owner and/or installer to warn the user and/or occupants of the tent system that this product is not intended to be used as a shelter in severe weather. Q tents accepts no liability for such use. An evacuation and communication plan for the area covered within this tent area is necessary and should be thoroughly communicated to all users and potential occupants of the tent. Severe weather, including electrical storm systems, moderate to heavy winds, heavy rain, snow, or any circumstance that casts doubt on the structural integrity of the tent, are immediate signs that an evacuation is necessary. Serious physical injury and/or death may occur.



COMMON SIGNS THAT WARRANT IMMEDIATE EVACUATION

- Any movement, shift or failure of the anchoring devices or support hardware.
- Any partially or completely defective component
- Cracks or holes in the membrane
- Any predicted moderate to severe weather condition
- Any collection or accumulation of snow or ice on the tent
- Strong winds causing movement and/or shifting of the tent or supporting structure
- Strong winds causing small branches to be torn from trees
- Lightning or electrical storms
- Hail or frozen precipitation larger than a pea
- Fire or smoke in the vicinity of the tent
- Small amounts of gas, exhaust fumes or other odours of combustible material

In case of predicted severe weather, hurricane or other early warning, it is recommended to evacuate the tent immediately and if time permits, to dismantle the tent and remove it from the site.

9 GENERAL GUIDELINES FOR DISMANTLING AND REMOVAL

The owner and/or installer should carefully consider the weather before dismantling the tent, as the hardware and fabric cannot transfer wind loads or drain rainwater loads (possible puddling) if the tent is not fully anchored, installed and/or tensioned. It is recommended to not install or remove the canvas at wind speeds above 25km/h (4bft). The decision to raise or lower the canvas of the tent should be the responsibility of the experienced based on conservative life safety considerations and good judgement.

Unless otherwise stated in the following procedures, removal of this tent system should follow the same procedures but in the reverse order.

After disassembly, each part of the system should be inspected by the installer for visible damage. All damaged materials should be marked or identified so that these materials can be repaired or replaced before the product is used again.





PARTS LIST

In appendix 1 of this manual you will find images of the following components.

1 NORMAL RIGGING

1. Pole cap 10 cm
2. Pole connector
3. Strap + loop
4. T-anchor 50 cm
5. Carabiner 8 mm

2 HEAVY RIGGING

6. Pole cap 17,5 cm
7. Pole connector
8. Rope 6 meters
9. Rope 0.8 meters
10. Anchor 1 meters
11. Carabiner 10mm

3 BAGS

12. Tent bag
13. Parts bag
14. Anchor bag

4 WOODEN POLE SET

15. Eye nut M8
16. Threaded bolt
17. Threaded rod M8
18. Wooden poles

5 ADDITIONAL PARTS

19. Side panels
20. Aluminium clamp
21. White profile 2.7m
22. Storm strap
23. Ratchet
24. Anchor plate
25. Wooden tensioner
26. Rope tensioner
27. Centerpole foot
28. Edgepole foot
29. Tension strap
30. Coupling gutter
31. Groundsheet
32. Aluminium poles





INSTRUCTIONS FOR SETTING UP A STRETCH TENT

A. PREPARATION

1. TOOLS

To make installation as easy as possible, it is important to have the following tools :

- Measuring tape
- Drill/screwdriver
- Wood drill bit 6 and 8 mm.
- Grinder or metal saw
- Heavy hammer/ mallet or sledgehammer
- Stairs/folding ladder (when sidewalls are installed)
- Ground sheet

2. CENTRE POLE

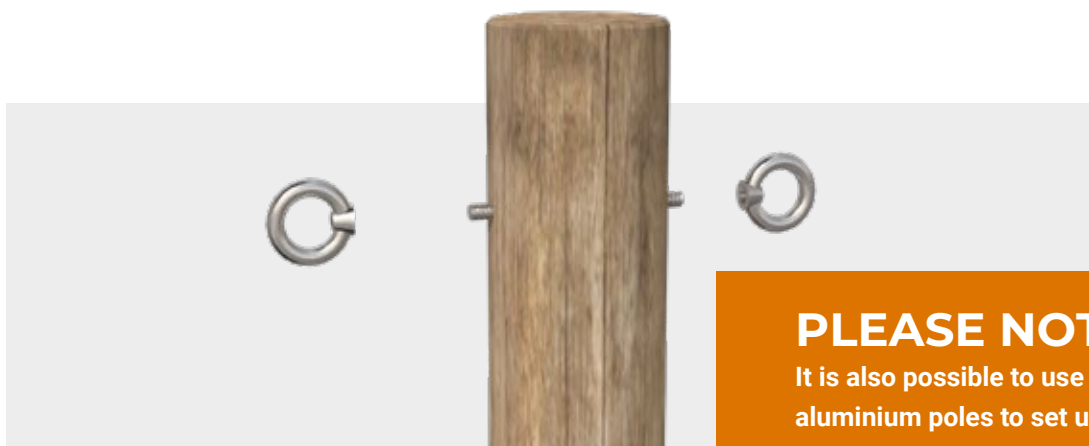
To make installation as easy as possible, it is important to have the following tools:

- For the center pole, use the 4m wooden poles.
- Drill a 6mm hole in the middle of the wooden pole. The narrow side of a wooden pole is always the top. Use the thicker side for the bottom.
- Then insert the wood threaded bolt through the connector and screw the bolt with connector into the pole. This requires some force. Make sure there's no space between the connector and wooden pole.



3. CORNER AND EDGE POSTS

- For the corner and edge posts, use the 2.5m and 3m poles.
- Drill a 8mm diameter hole 10cm from the top into the wooden pole.
The narrow side of a wooden pole is always the top. Use the thicker side for the bottom.
- Insert the threaded bolt through the hole and tighten the eye nuts on the threaded bolt on both sides so that it's installed firmly against the post.
- On all wooden poles (except the center poles) attach a carabiner to one of the two eye nuts.
- The eye nuts should be tight against the wooden pole and unable to move once you have tightened them. Make sure that 2 carabiners can always be attached to an eye nut. If the threaded rod turns out to be too long, shorten it with a grinder or metal saw.



PLEASE NOTE

It is also possible to use aluminium poles to set up the stretch tent. In this case preparation step 2 and 3 will be different. See page 27.

4. ROPE

- Please prepare the 6-meter and 0,8 meter ropes. We use an overhand loop in both ropes. Please find an explanation with photos of the overhand loop in the attachment.
- Subsequently place 1 carabiner per rope on the loop you have just made.
For the small loop please do not use a carabiner.





B. IMPLEMENTATION

1. GROUND SHEET

To make installation as easy as possible, it is important to have the following tools :

- Find a suitable flat surface:
 - Lawn
 - Courtyard
 - Terrace
- Lay down a ground sheet on the construction site to protect the tent fabric.



- Place the tent fabric on the groundsheet and roll it out. Make sure that the coating side is up and not the canvas side. The coating side feels smoothly. Please make sure the tent is completely unfolded so you can roughly determine the place of the anchors.



2. SETTING OUT ANCHORS

When the tent is completely unfolded, please go to attachment 2. In this attachment you can exactly find where and how many anchors you need to install. The table tells you per dimension where each anchor should be installed. Start with the anchors in the corners and then install the remaining anchors.

3. INSTALLING ANCHORS

Please install the anchors deep into the ground at a 80-degree angle. Use a heavy mallet or sledgehammer. The anchors should be 10 cm above ground level.



The short loops (9) will be attached around the anchor. Attach a carabiner to the loop.





4. CORNER POLE

Place the wooden poles (except the center poles) next to the tent at the level of the anchors. The poles in the corners are 2.5 meter and the edge poles are 3 meter. Then attach the ropes to the wooden poles with the carabiner. The remaining ropes will be used to make the “roof” in the tent later on.

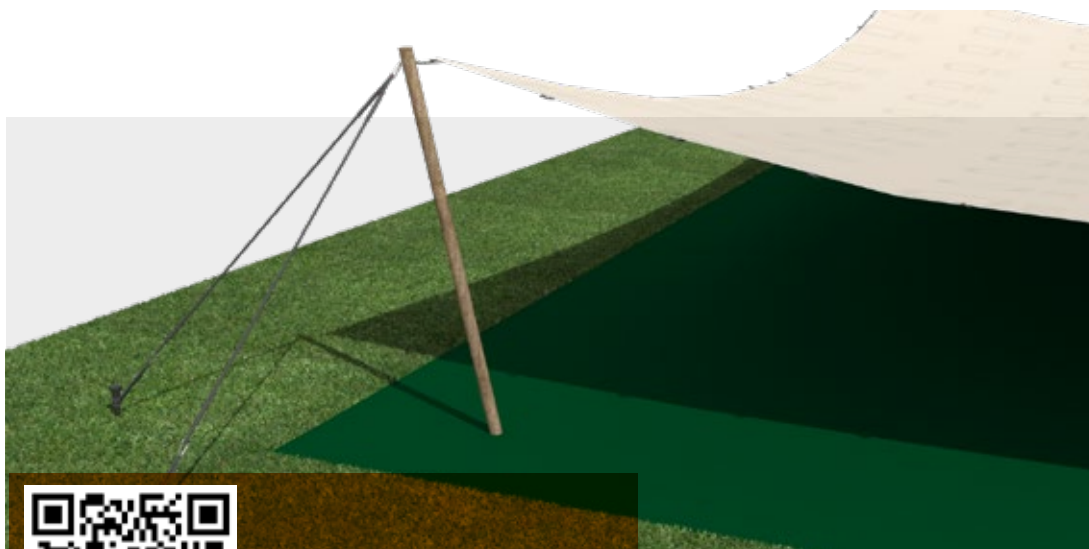


ATTENTION!

When setting up the corner poles, please do not place them on the groundsheet.

Put the corner poles upright and tension them using the ropes. Make a loop at about $\frac{1}{2}$ of the length of the rope. Please make this loop with a directional loop. In appendix 3.2 you will find an explanation how to make this loop. Then thread the rope through the carabiner on the loop (anchor) and thread the end of the rope through the loop (at $\frac{1}{2}$) you just made. Please now tighten the tent by pulling the end of the rope down. Put your thumb at the level of the loop on the tightened rope. Please now tie a knot with your other hand.

Please note: Step 4, 5 and 6 are the same when you are using aluminium poles instead of wooden poles. More information about aluminium poles on page 27.



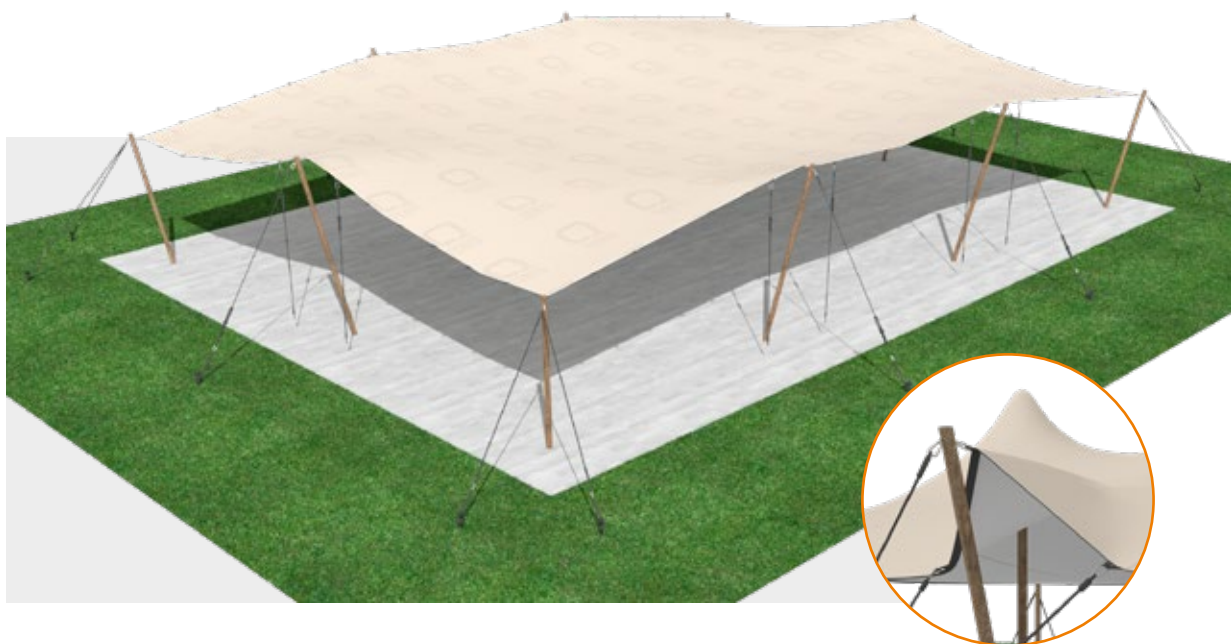
Video about how to tension the ropes without rope tensioners.

<https://www.youtube.com/watch?v=aNEJuXUpaH4>

When all corner poles are installed correctly, please remove the ground sheet.

5. EDGE POLE

Place the edge poles. The ropes for the edge poles are tightened in the same way as the corner posts. Before raising and tightening the post, first attach a rope with carabiners to the left and right loops, right next to the edge post. These make the “roof” in the stretch tent.



6. CENTER POLE (1)

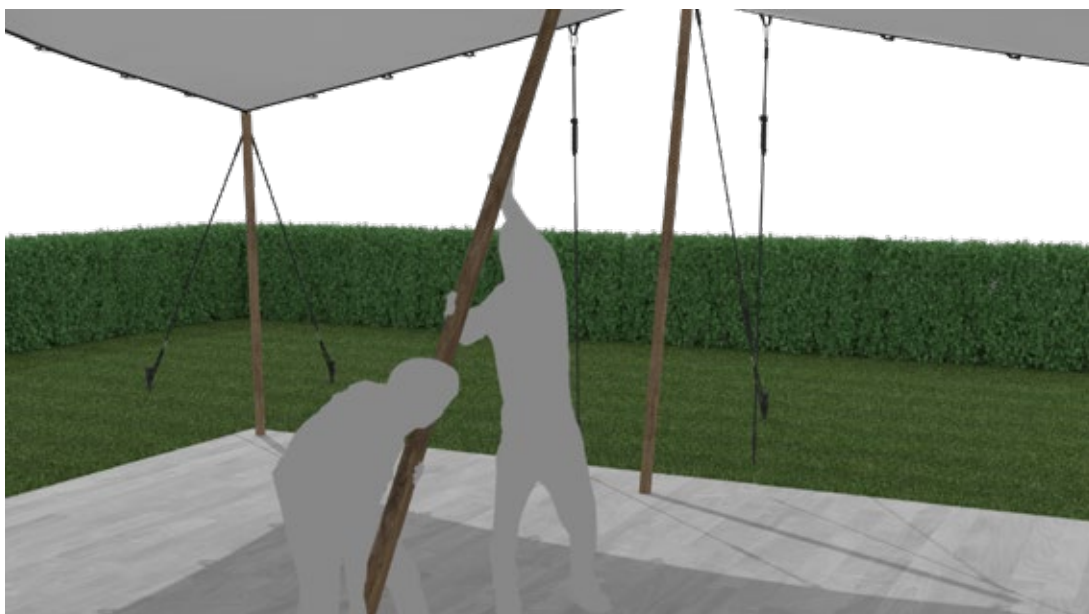
Place the black or white pole cap on the connector attached to the center poles.





6. CENTER POLE (2)

Place the center poles below the tent. The center pole should be set up with at least two people. One person pushes the center pole up from above. This person actually stands still at the exact location where the center pole should be. The second person grabs the bottom of the pole and pushes it towards the other person. In this way, the pole rises and can be installed in an upright position.



7. FINISHING

- When the center pole(s) are installed, tighten the corner and edge poles one more time.
- Please also tension the ropes to the right and left of the edge poles in the same way as done with the corner and edge poles. This gives you a "roof" in the tent fabric. Besides looking nice, it also has another important function: water drainage.



- When all poles are installed and the roofs are made, the ropes should be neatly wrapped as shown in the picture below.



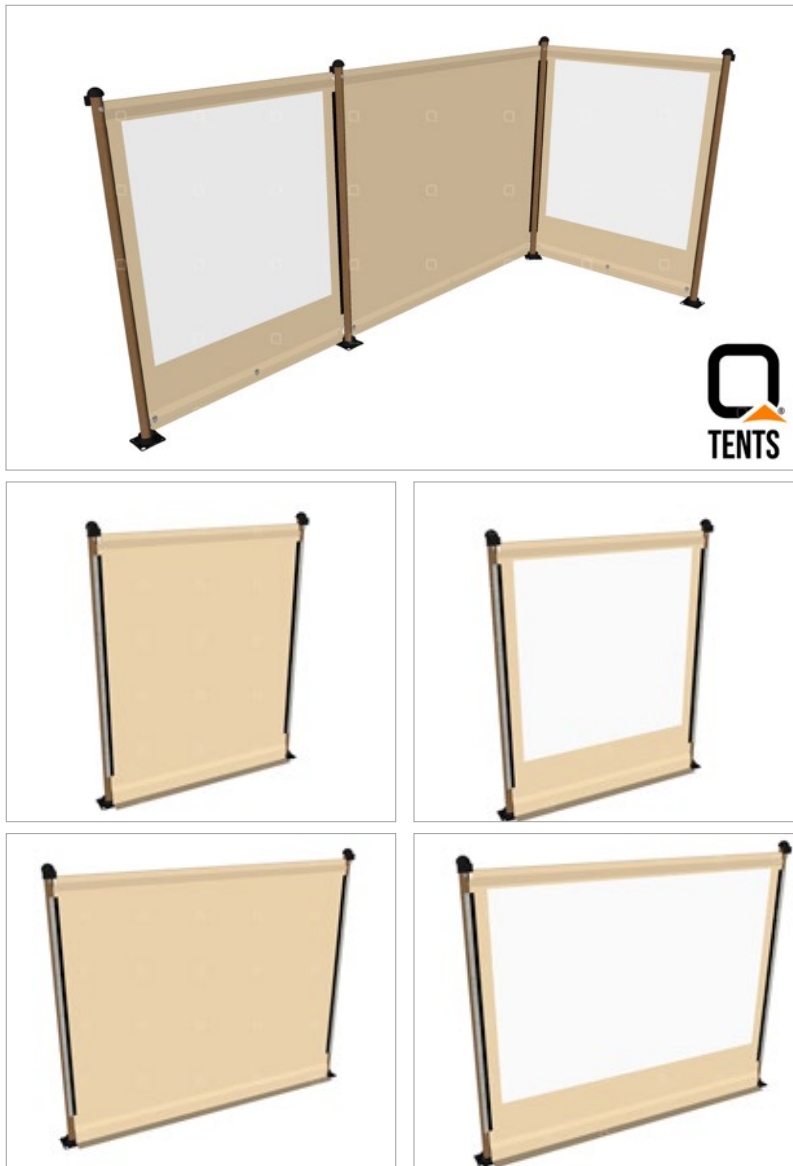


C. ADDITIONAL OPTIONS

1. SIDE WALLS

Sidewalls are an additional option available for stretch tents, designed to provide enhanced protection against weather elements such as rain and wind. These sidewalls can be attached to one or more sides of the stretch tent.

Side walls are available in colours black and sand in width 2 and 3 meters. Per sidewall you can choose if you would like the sidewall with or without a transparent part. Sidewalls can be connected.



The detailed installation instructions you can find in appendix 4 of this installation manual.



2. STORM STRAPS

To anchor the stretch tent, you can use a storm strap set. Depending on the size of the tent, you use 1 to 6 storm straps. A storm strap absorbs the movement of the wind, so the tent moves less and has less chance of being damaged.

TIP:

When assembling the tent, it is advisable to install the storm strap over the tent after section 1 groundsheet. This avoids having to throw the storm strap over the tent.

- Install the anchor plates on the ground. Then insert 2 anchors into the holes of the anchor plates.
- Attach the ratchet with loop to the anchor plate on one side using a carabiner.
- Attach a carabiner to the other anchor plate. Please make a loop at the end of the storm strap and attach the loop to the carabiner.
- When the tent is fully installed (After chapter 6 edge poles) pull the end of the storm strap through the ratchet. You can now tighten the storm strap.

3. CENTER POLE FOOT

A center pole foot prevents the center pole from coming loose from the fabric in strong winds.

- After you install the center pole, please put the center pole foot as close to the pole as possible. Next, lift the pole up onto the center pole foot. Then position the pole against the raised edge. Position the center pole foot back in place.
- Insert 2 anchors diagonally into the center pole foot.
- Place the two tensioning straps around the center pole foot and pole.

4. EDGE POLE FOOT

An edge pole foot prevents the corner and edge pole from shifting during a strong gust of wind.

- When installing the corner and edge poles, first put them in the edge pole foot. Then install the tent as indicated from chapter 4.
- Install 2 anchors in both holes of the edge pole foot to prevent it from moving.

WARNING

At 9 Beaufort wind force (103-117 km/h) we always recommend taking down the tent.



5. WOODEN TENSIONER

A wooden tensioner allows you to tension the tent in a different way. A wooden tensioner is often used for esthetic reasons.

- Install the loop of the rope (6m) on the loop attached to the anchor.
- Install the carabiner on the wooden post.
- Pass the end of the rope through the wooden tensioner and then through the carabiner on the post.
- Then thread the end through the 2nd hole of the wooden tensioner.
- Lightly tension the rope and tie a knot in the rope at $\frac{3}{4}$ of its length (measured from the bottom) so that the wooden tensioner stays on the knot.
- Then pull the wooden tensioner down to tighten the rope.

6. ROPE TENSIONER

The rope tensioners from Qtents makes it easy to put the right tension on the tent by just pulling the rope. No need to use complicated knots.

Scan the QR code to see how you can use our rope tensioner.



How to use our rope tensioners



<https://youtube.com/shorts/BaQq7--ZUW4>

7. COUPLING GUTTER

When connecting two tents, use a coupling gutter.

- Build up one tent, follow the steps in this installation instruction. On the side where both tents will be connected no edge pole(s) will be installed.
- Lay down the other tent on the groundsheet. Connect both sides using a carabiner on each loop on the side where you want to connect the two tents.
- Please note that there will be no edge poles on the sides that are coupled. Only on the outer sides.
- When the tents are fully installed as described in the procedure execution place the coupling gutter. You do this by attaching the black edge on the coupling gutter to the black velcro on the tents.

8. ALUMINIUM POLES

When it comes to setting up stretch tents, choosing the right support structure can make all the difference. Aluminum poles offer a modern, practical upgrade from traditional wooden poles. Aluminum poles are significantly lighter than wooden poles and can be divided into smaller sections, making them compact and easy to transport. This feature simplifies logistics and reduces the storage space required.

Aluminium poles are modular, offering the flexibility to determine the height of the poles according to your requirements. Below is a detailed guide for using aluminium poles instead of wooden poles:

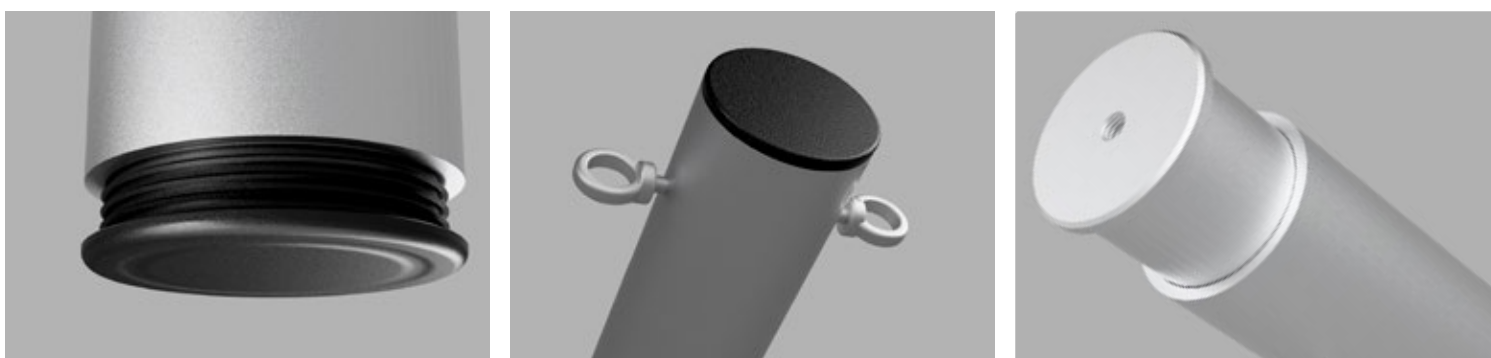
- The center poles are poles with diameter of 76mm.
- The edge poles are aluminium poles with a diameter of 50mm.

Both poles are available with sections of 500mm and 1000mm. These sections can be combined to achieve the desired pole height. The sections can be connected with matching aluminium connectors. See images below.



To finish the poles you need to follow these steps:

- The center poles and edge pole should get a black cover cap on the bottom. The edge pole should get the same cap at the top of the pole.
- The edge poles should be ending with a section with holes on the side. The holes are designed to add the eye nuts.
- The center poles should also get an aluminium cover cap at the top of the pole. This aluminium cap has a hole in it. This hole is designed for attaching the pole connector, which allows the pole cap to be mounted later





MAINTENANCE INSTRUCTIONS

To keep your stretch tent in optimal condition, we have a few tips for you. Please read and follow these guidelines carefully.

ROPE TENSION

Check the tension on the ropes daily for the first two weeks after installation. Because the fabric is made of stretch material, it will continue to stretch. If the ropes are no longer tight, you will need to tighten them. It is possible to have this done by Qtents for an additional fee. After this initial period, check the tension monthly.

WEATHER PRECAUTIONS

In winds of force 9 or higher, or in heavy snowfall, we advise you to dismantle the tent. If you dismantle the tent, you can leave the anchors in place. This way, you can be sure that the tent will be in the same position when you set it up again.

STORAGE

Always sweep away leaves and other debris, and make sure the tent is dry before packing it. If the tent is wet, hang it to dry within 7 days to prevent mold from developing on the fabric. For packing a side wall with transparent fabric, do not fold it. Instead, roll it up to prevent damage to the transparent material.

REMOVING LEAVES, SMALL STAINS OR DIRT

To remove small stains or dirt, use a soft brush or sponge with clean water and a mild cleaning agent, such as green soap or all-purpose cleaner. Thoroughly moisten the stain and remove it using the brush and/or sponge. Allow the area to dry completely afterward.

WASHING THE TENT

If you wish to wash the entire tent, you can use a pressure washer.

- Place a groundsheet on a flat surface. The groundsheet should be at least 1 to 2 meters larger than the tent.
- Lay the tent on the groundsheet with the bottom/inside facing down.
- Use the pressure washer to clean the tent, keeping a minimum distance of 50 cm between the pressure washer and the fabric.
- Turn the fabric over so that the top/outside is now facing down and the inside/bottom is facing up.
- Clean this side in the same manner as the outside.
- After cleaning, leave the fabric to dry or hang it up to dry.
- When the inside is dry, you can set up the tent to allow the outside to dry as well. The tent must be completely dry, including seams and loops, before packing and storing it

We recommend using a standard pressure washer with a maximum spray power of 130 Bar.



Video about how to tension the ropes without rope tensioners.

<https://www.youtube.com/watch?v=aNEJuXUpaH4>





ATTACHMENT 1 - PART LIST

1.1 NORMAL RIGGING



1. Pole cap 10 cm



2. Pole connector



3. Strap + loop

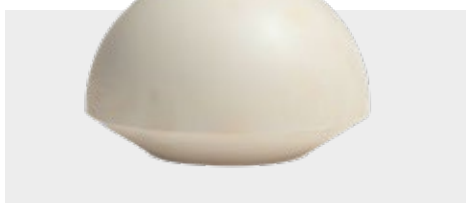


4. T-anchor 50cm



5. Carabiner 8mm

1.2 HEAVY RIGGING



6. Pole cap 17,5 cm



7. Pole connector



8. Rope 6m



9. Rope 0,8m



10. Anchor 1m



11. Carabiner 10mm



1.3 BAGS



12. Tent bag



13. Parts bag



14. Anchor bag

1.4 WOODEN POLE SET



15. Eye nut M8



16. Threaded bolt



17. Threaded rod M8



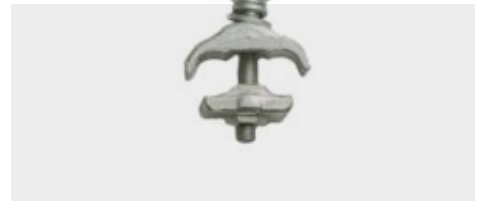
18. Wooden pole



1.5 ADDITIONAL PARTS (1)



19. Side panels



20. Aluminium clamp



21. White profile 2,7m



22. Storm strap



23. Ratchet



24. Anchor plate

1.5 ADDITIONAL PARTS (2)



25. Wooden tensioner



26. Rope tensioner



27. Centerpole foot



28. Edgepole foot



29. Tension strap



30. Coupling gutter



31. Groundsheet



32. Aluminium poles



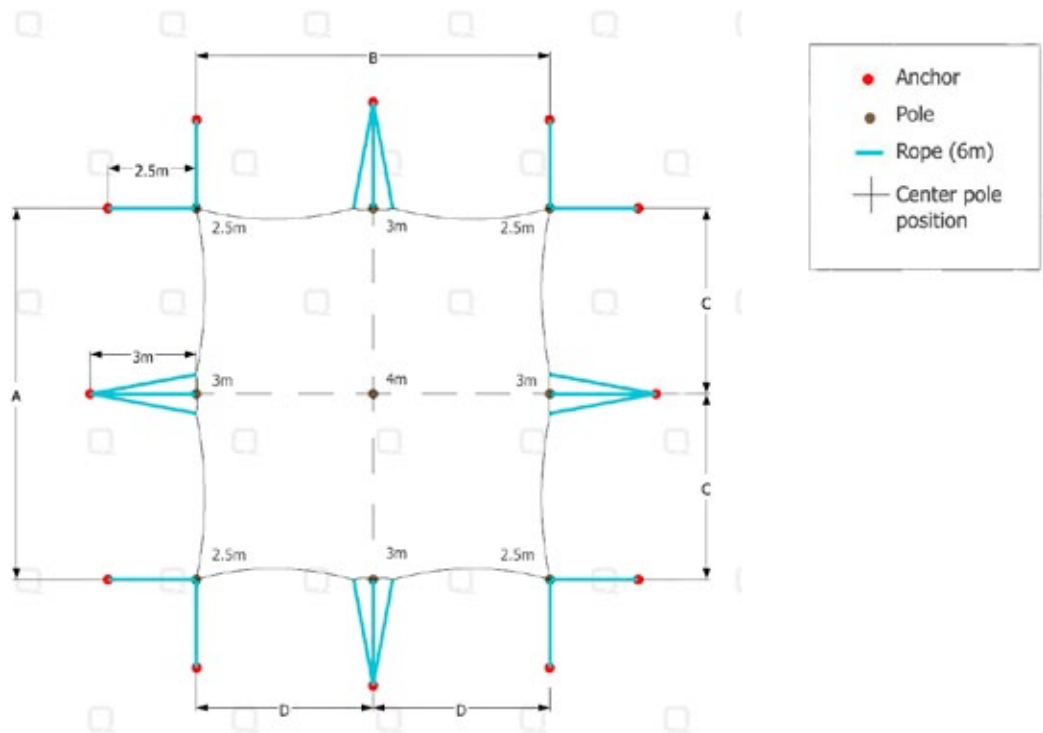
ATTACHMENT 2 - FLOORPLAN

2.1 FLOOR PLAN - 1X CENTER POLE

Stretchtent standard Footprint (single center row)

CENTER POLE #	SIZE	CORNER POLE Length = 2.5m	SIDE POLE Length = 3m	CENTER POLE Length = 4m	CENTER POLE Length = 4.5m
ONE	4.5 x 6m	4	4	1	-
	6 x 6m	4	4	1	-
	7.5 x 7.5m	4	4	1	-

CENTER POLE #	SIZE	A Meter	B Meter	C Meter	D Meter	E Meter
ONE	4.5 x 6m	4.50	6.00	2.25	3.00	-
	6 x 6m	6.00	6.00	3.00	3.00	-
	7.5 x 7.5m	7.50	7.50	3.75	3.75	-

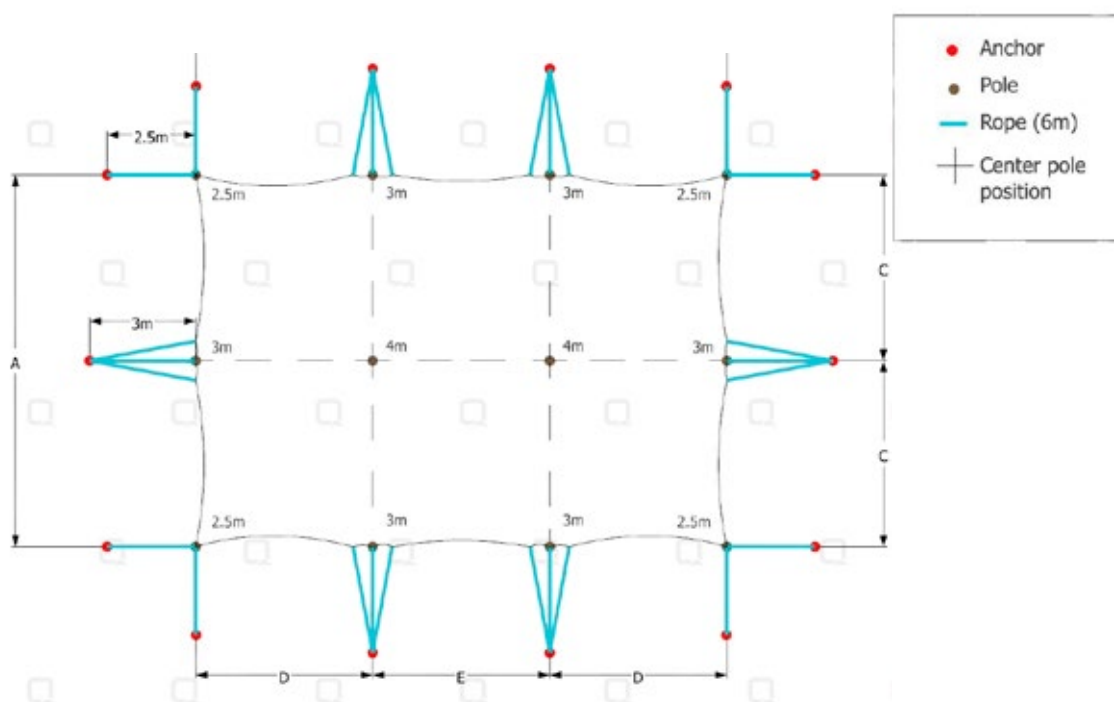


2.2 FLOOR PLAN - 2X CENTER POLES

Stretchtent standard Footprint (single center row)

CENTER POLE #	SIZE	CORNER POLE Length = 2.5m	SIDE POLE Length = 3m	CENTER POLE Length = 4m	CENTER POLE Length = 4.5m
TWO	6 x 10,5m	4	6	2	-
	7,5 x 10,5m	4	6	2	-
	10,5 x 10.5 m	4	6	2	-
	10,5 x 12m	4	6	2	-
	10,5 x 15m	4	6	2	-

CENTER POLE #	SIZE	A Meter	B Meter	C Meter	D Meter	E Meter
TWO	6 x 10,5m	6.00	10.50	3.00	3.75	3.00
	7,5 x 10,5m	7.50	10.50	3.75	3.75	3.00
	10,5 x 10.5 m	10.50	10.50	5.25	3.75	3.00
	10,5 x 12m	10.50	12.00	5.25	4.50	3.00
	10,5 x 15m	10.50	15.00	5.25	5.25	4.50



Stretch 2x center pole

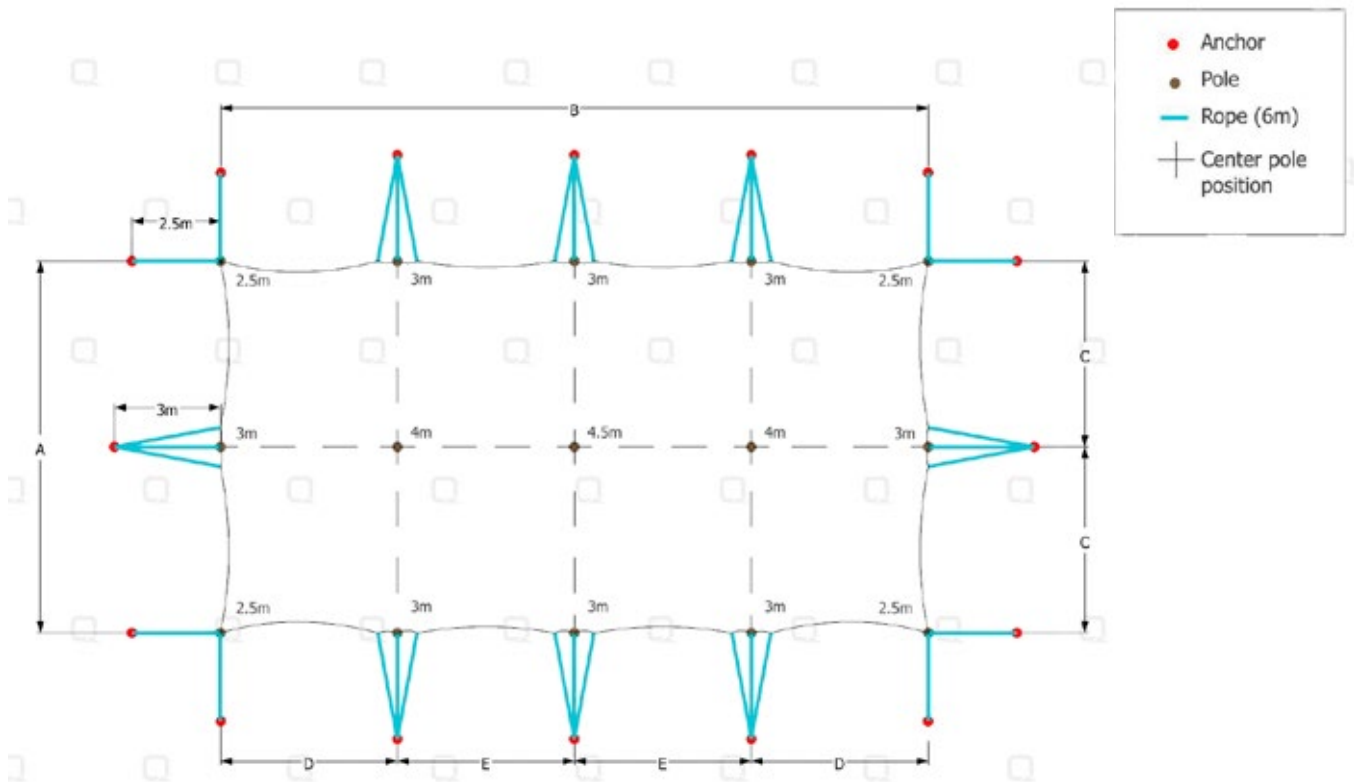


2.3 FLOOR PLAN - 3X CENTER POLES

Stretchtent standard Footprint (single center row)

CENTER POLE #	SIZE	CORNER POLE Length = 2.5m	SIDE POLE Length = 3m	CENTER POLE Length = 4m	CENTER POLE Length = 4.5m
THREE	10,5 x 19,5	4	8	2	1

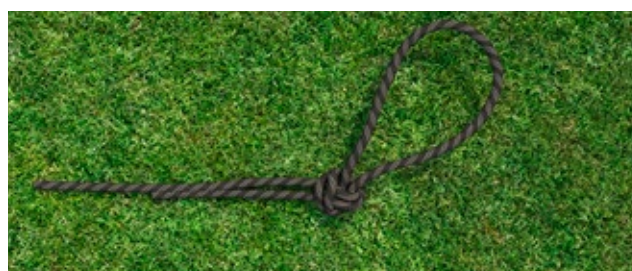
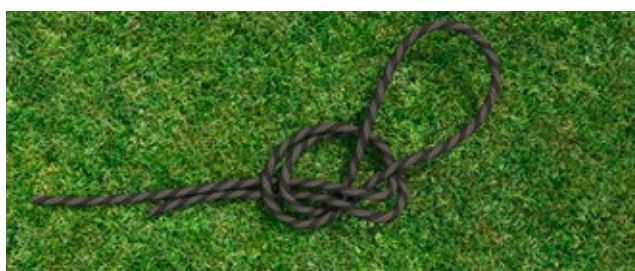
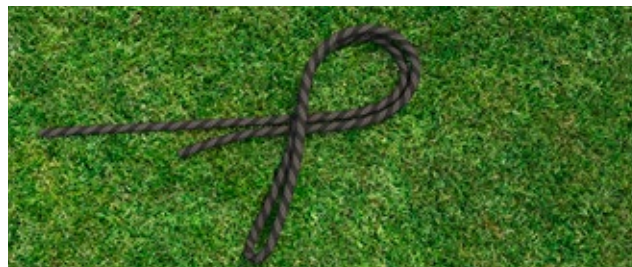
CENTER POLE #	SIZE	A Meter	B Meter	C Meter	D Meter	E Meter
THREE	10,5 x 19,5	10.50	19.50	5.25	5.25	4.50



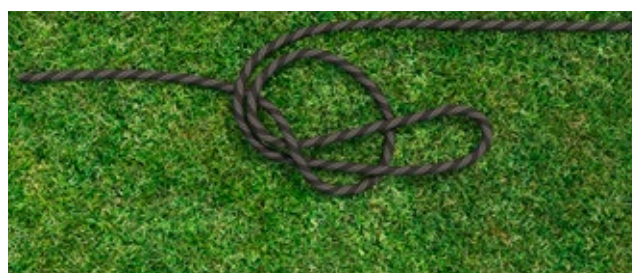
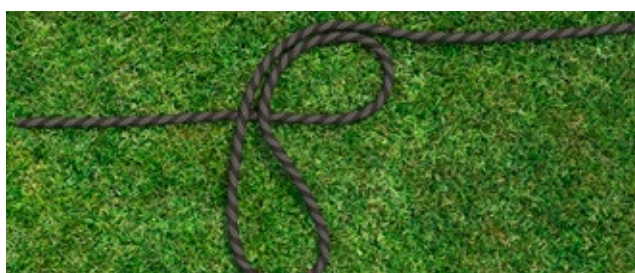
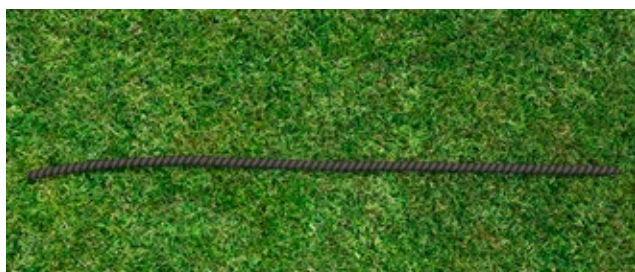
Stretch 3x center pole

ATTACHMENT 3 - KNOTS

3.1 OVERHEAD LOOPS



3.2 DIRECTIONAL LOOPS





ATTACHMENT 4 - INSTRUCTIONS FOR INSTALLING THE SIDE WALL SYSTEM

4.1. INSTALLATION PREPARATION

1. PREPARE THE BOX PROFILE

Mount the lip to the top of the box profile. Secure the lip to both sides of the top box profile using two M5 Torx bolts on each side.



2. TOP BRACKET

Install the M10 hex bolts on the top bracket. Insert the two M10 hex bolts into the top bracket with the threads facing upward. Next, mount the top bracket on to the pole. Use a pole connector and a wood screw to attach the top bracket to the top of the pole.



3. THREADED ROD

Secure the threaded rod with eye on the pole, right below the top bracket.



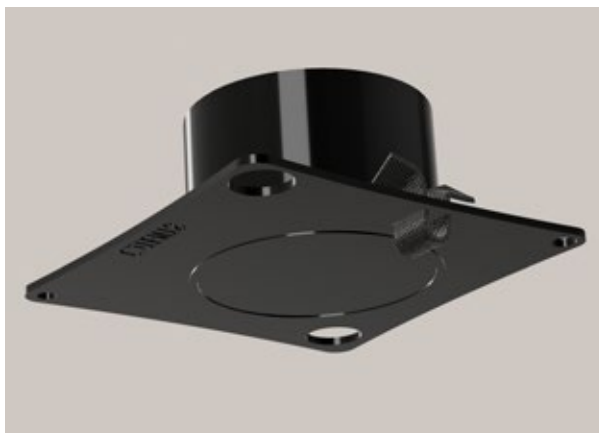
4. ALUMINIUM PROFILE STRIP

Attach the aluminum profile to the center of the pole using three self-tapping screws. Ensure the correct side of the profile faces the pole during installation. Typically, the pole has a height of 2.5 meters and the aluminum profile is 2 meters long. Make sure the profile is mounted approximately 20 cm from the top of the pole.



5. STRAPS

Thread the strap through the slots of the edgepole foot.





4.2 INSTALLATION STEPS

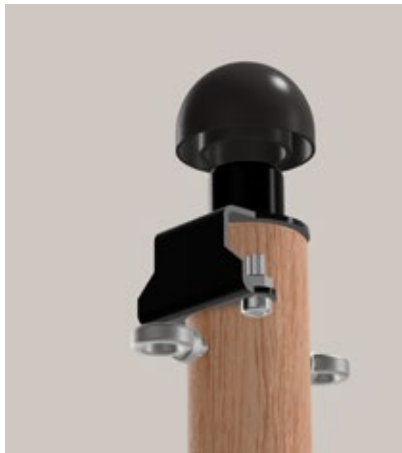
1. DETERMINE LOCATION OF THE SIDE WALLS

Side walls need to be placed between 25-50cm 'inside' the stretch tent, depending on the length of the side wall and the size of your tent.

First step is to drive a T anchor into the ground ~2 meters from where each pole will be positioned.

2. PLACE THE POLES

First place the protective polecap on top of the pole connector. Insert the pole into the edge-pole foot. Use a rope to pull the pole towards the T anchor, ensuring the cap of the pole fits into the tent fabric.



Repeat these steps for the second pole.

3. BOX PROFILES IN THE SIDE WALL

You have two different box profiles; a top box profile (the one you prepared with 'lips') and a bottom box profile (without 'lips'). Start with the box profile with lips. Slide this profile through the upperfold of the side wall.

Next, hang the top box profile onto the top bracket by sliding the hole in the 'lip' over the bolt on the top bracket. No additional securing is needed.



When the top box profile is attached and secured to the top brackets, you can also slide the bottom box profile through the lower fold of the side wall.

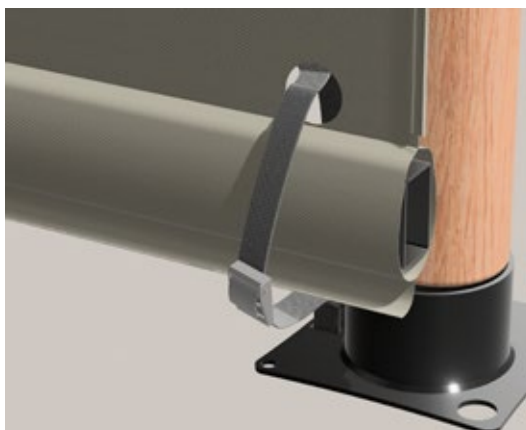
4. SECURE THE SIDE WALL

Unzip the zippers of the side wall and guide the part with tendon through the aluminium profile you mounted on the poles. When the tendon is at place, you can zip the zippers back onto the side wall.



5. TIGHTEN THE SIDE WALL

Make sure the tension on the side wall is correct to prevent the fabric of the side wall to flap. You can do this by using the strap at the edgepole foot to tension the bottom box profile.



If additional poles and/or side walls are required, repeat the above steps to continue building.



WARNING

If you are not using the side walls and want to store them, make sure not to fold the side walls with transparent sections. Instead, roll them up to prevent damage to their appearance.



4.3 SIDEWALL PART LIST



Box profile



Top bracket



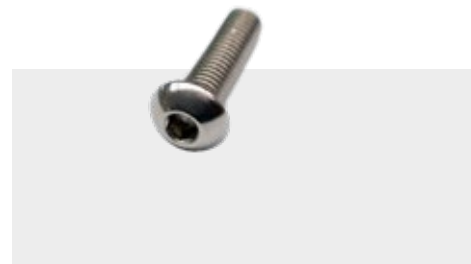
Lip



Side wall fabric



M5 Torx bolt



M10 Allen bolt



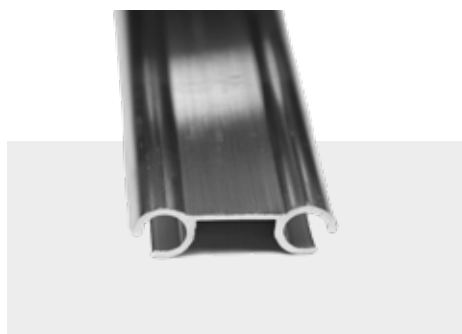
M10 Nut



Pole connector



Wood thread bolt



Aluminium profile



Wooden pole



Edge pole foot



Eye nut M8 + Threaded rod M8



Rope 8mm + Carabiner M10



Pole cap



T anchor



**FOR MORE INFORMATION
PLEASE VISIT OUR WEBSITE
[QTENTS.COM](https://qtents.com)**

Zanddonkweg 2a
5144 NX Waalwijk
The Netherlands

+31(0)85 040 9963
sales@qtents.com